

Introducing  
**How ACE Became an  
Asthma Control Expert**  
– the storybook ...

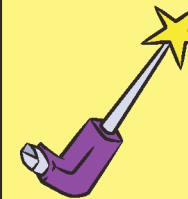


**Meet the characters!**

## Become an Asthma Control Expert



**Long-Term Medicine (Magic Potion)** – This is sometimes called asthma control medicine. It helps to prevent your airways from swelling or becoming tight.



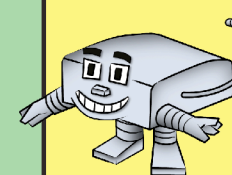
**Rescue Medicine (Magic Wand)** – This is an inhaler. It is called an inhaler because you need to breathe in the medication in order for it to work.



**Prednisone (Mega-Magic Potion)** – Prednisone is a drug that is used to help a swollen area of the body get better.



**Peak Flow Meter (Crystal Ball)** – A peak flow meter is a portable, hand-held device used to measure how air flows from your lungs in one “fast blast”.



**Nebulizer (Neb U. Lizer)** – Nebulizers mix medicine with sterile water or another liquid medicine to make a mist that you breathe in.